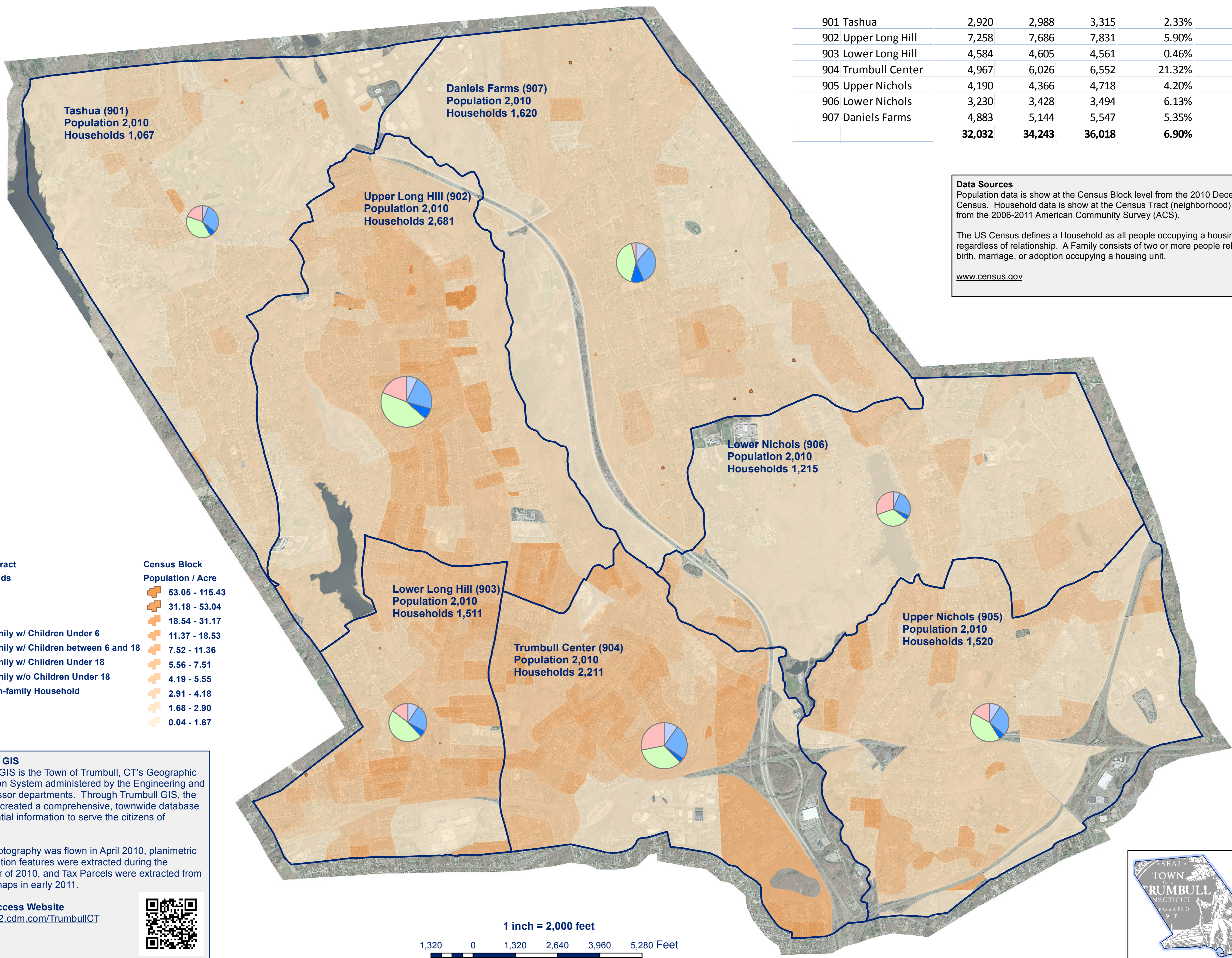


901 Tashua	2,920	2,988	3,315	2.33%	10.94%
902 Upper Long Hill	7,258	7,686	7,831	5.90%	1.89%
903 Lower Long Hill	4,584	4,605	4,561	0.46%	-0.96%
904 Trumbull Center	4,967	6,026	6,552	21.32%	8.73%
905 Upper Nichols	4,190	4,366	4,718	4.20%	8.06%
906 Lower Nichols	3,230	3,428	3,494	6.13%	1.93%
907 Daniels Farms	4,883	5,144	5,547	5.35%	7.83%
	32,032	34,243	36,018	6.90%	5.18%

Data Sources
 Population data is show at the Census Block level from the 2010 Decennial Census. Household data is show at the Census Tract (neighborhood) level from the 2006-2011 American Community Survey (ACS).
 The US Census defines a Household as all people occupying a housing unit regardless of relationship. A Family consists of two or more people related by birth, marriage, or adoption occupying a housing unit.
www.census.gov



Census Tract Households
 840

- Family w/ Children Under 6
- Family w/ Children between 6 and 18
- Family w/ Children Under 18
- Family w/o Children Under 18
- Non-family Household

Census Block Population / Acre

- 53.05 - 115.43
- 31.18 - 53.04
- 18.54 - 31.17
- 11.37 - 18.53
- 7.52 - 11.36
- 5.56 - 7.51
- 4.19 - 5.55
- 2.91 - 4.18
- 1.68 - 2.90
- 0.04 - 1.67

Trumbull GIS
 Trumbull GIS is the Town of Trumbull, CT's Geographic Information System administered by the Engineering and Tax Assessor departments. Through Trumbull GIS, the town has created a comprehensive, townwide database of geospatial information to serve the citizens of Trumbull.

Aerial Photography was flown in April 2010, planimetric and elevation features were extracted during the remainder of 2010, and Tax Parcels were extracted from existing maps in early 2011.

Public Access Website
<http://ags2.cdm.com/TrumbullCT>

